

Dear Friends

In his younger days, Benjamin was under the firm impression that the 'Blue Book' which contains the Annual Reports of The General Assembly was in fact my Bible. It is not. It's just that in late May and early June his father reads little else - 364 pages is a lot to get through. This year The General Assembly will decide whether or not to sell Church House. Apparently we need to sell it before it either sinks into the mire or crumbles away. Both are likely to happen – and soon! Those of us who remember the millions spent on it in the early 90s and who are now asked to pronounce upon its fate see a parable of the whole church. I don't know what we will decide but I am sure we will take a more realistic and forward-looking view than we would have in the past.

As I plough through the reports much is positive and encouraging and there is much in First Lisburn which is encouraging: New families, new elders, a stronger financial base, a forward-looking attitude, and we even have new blue notice boards to match my Blue Book. But there is a change in tone in PCI. We have, thankfully, lost the over-confident and comfortable tone, which might be said to have been there even 15 years ago. Scan the text of the Reports and you will find words like 'review', 'assessment' and 'without delay'. All this is good. Church House for me sums it up. We have a fine past, but a far more challenging future. It seems that gazing at the stained glass windows and wondering if a bit of new grouting to the stonework will do, is no longer going to work. And, the new thinking applies to more than PCI buildings.

One report in the Blue Book comes from the Union Commission of which I am a member. It is the Urban Mission Panel's Report. One paragraph reads:

'The most recent census lists 17 per cent of the population of Belfast as Presbyterian (this includes suburbs in which the proportion would be higher). The same census declares that almost the same number of residents declare "no religion or religion not stated". It is likely that they are more of a "Protestant" background in the latter group than Roman Catholic.'

Research in the Congregations under review showed:

'Many of our urban congregations comprise of ageing people, of a different social class from residents around the church, who lived a marked degree outside the parish area, and who came in to offer services to a community which was ignoring them. The end result of the latter in five to ten years is obvious to anyone with the courage to admit it.'

This is about as bad as it gets - in Blue Book terms. It is more worrying in that many of the congregations seem to be 'beyond' changing.

My Blue Book tells me that in 2003, PCI lost 1,419 families comprising 2,832 people. The year 2003 left us with 1,970 less communicants, ten less ministers - that is one per cent of the workforce and 85 fewer elders. A total of 628 children left PCI Sunday Schools last year. We started 2003 with 555 congregations, we ended with 552. Three PCI congregations closed. We are part of a denomination that sometimes measures success in terms of how slow we are declining!

I firmly believe that we in First Lisburn are well placed to do more than survive. We have a fine past - this we know. We are all involved in looking to the future - this we affirm. We are currently good at welcoming new people – so if they sit in a pew which you normally occupy, thank God for them. We have moved forward with the vision of Future First.

There are lots of people out there who have stopped doing church. They are convinced that the church is not for them. In some cases they may be right. They find it hard to get over the door. They imagine it will all be user unfriendly. They think people own pews. They imagine it will be stuffy or so hot and heavy they will have involuntarily lost weight by 12 noon.

First Lisburn's most pressing task is to bring people to belong – so that the spirit of God will help them to believe. You are commissioned to go out and bring them in. You and you alone. Tell them there is a church where they can belong. That's all. Nothing more. But we need you to do it. So, don't worry about someone sitting in what you perhaps wrongly see as 'your' pew, bring someone with you to sit in somebody else's pew. It's the only way a church grows. And the whole idea even pre-dates the Blue Book.

Jesus once said this: *'We have a wedding banquet all prepared but no guests. The ones I invited weren't up to it. Go out and into the busiest intersections in town and invite anyone you find to the banquet'. The servants went out on the streets and rounded up everyone they laid eyes on, good and bad, regardless. And so the banquet was on - every place filled (The Message Translation).*

One section of The Blue Book will find support in First Lisburn. It reads:

Mrs Hazel McCall

'Hazel McCall has been Convener of the World Development Committee for the past five years. As a former member of the Committee, Hazel demonstrated passion for and dedication to the work of world development and this continued during the years of her convenership. She developed relationships with people at home and overseas which made her commitment to world development deeply personal. She was not afraid to work long hours planning and organising the annual appeal. During her time as Convener the appeal passed £500,000 for the first time and she was pleased to see more than £1 million raised for the AIDS Appeal. The Board records its grateful appreciation to Hazel for her work and achievements during her convenership.'

We in First Lisburn add our thanks.

I'm going back to my Blue Book now. And may the Lord bless to me the writings of his Church.

John Brackenridge

Presbytery news: The Rev. John Brackenridge will install the **Rev. Andrew Thompson** as Minister of Elmwood Congregation on Monday 14 June. Andrew is currently Minister of Craigavon and Vinecash Congregations. His wife Donna works in the Sunday School Department in Church House and they have a son, Ben.

From your Editor

Here we are at the start of the summer season, hoping to recharge our batteries after a busy year of activity – and that includes us 'retired' folk!

But, before you go off on holiday, there is much to interest you in this edition of our magazine. The highlight, of course, is the installation of our ten new elders on 30 May and I know they will be warmly welcomed by the families in their districts when assigned to them. Mr Brackenridge writes about their ordination on the following page.

On the previous Sunday we were all inspired by the moving Service led by the Downtown Centre. Congratulations to Margaret Bailie and all who are so dedicated to the work of the Centre. They deserve our support, and hopefully it won't be long until a new treasurer is appointed.

On a similar theme, have you noticed the increasing number of our members who are committed to outreach work around the world? They give so freely of their time and talents, both spiritual and practical, to improve the lives of those in great need. Denise Kane will soon have a team from First Lisburn working in Uganda!

But it doesn't stop there – not only has Paula Nicol found fulfilment in her work on the 'Aurora' – Youth For Christ Programme, in Stoke-on-Trent, but she has also found happiness! Our congratulations and best wishes to Paula and her fiancé, the Rev Paul Gallucci, on their engagement as they make plans for their wedding in First Lisburn in October. Paul is a Methodist Minister in Stoke and they met through his association with the 'Aurora' – Youth For Christ programme.

However, happiness can also be found very close to home. It is some time since two members who grew up together in our congregation have 'tied the knot'. We congratulate Paul and Jenny and our other newly-weds and wish them God's blessing for the future.

This is the time of year when we think of our young folk who are undertaking important examinations at school and at higher level. We wish you all the best of luck!

I look forward to working with Petula following her appointment as Office Administrator, and I hope you all have an enjoyable summer and return refreshed in the autumn.

Mary McNeight

ORDINATION OF TEN NEW ELDERS

The Presbytery of Dromore with Acting Moderator, The Rev. Dr Bert Tosh, installed ten new elders in First Lisburn:

MARION CRAIG
KARIN FINLAY
SHEILA HAMMONDS
MAUREEN KILLINER
IAN MCDUGALL
GORDON MCKEOWN
RICHARD MILLEN
CECIL RUSSELL
MARGARET THOMPSON
ANDREW VIENT

The day was significant, not only because it is unusual to have such a good number of elders to ordain, but also because it is the first ever installation of Elders at a morning service in our Presbytery - and indeed for most others for as long as we can remember! Our Kirk Session felt it would be good to have a full congregation and also to include the children and young folk in the ordination and we were pleased that Presbytery agreed. Indeed, Dromore have decided to encourage all congregations to do the same. Everything from the fine praise to the informal reception afterwards went well. We record thanks to Margaret McIlmoyle and her team, Elaine, the choir, musicians and the Commission. Perry is currently working on assigning the new elders to their districts. Each new elder will be introduced with a personal letter complete with a photograph so that each family in the relevant districts can identify their new elder. This will happen by September. We wish our new elders well. I am certain they will serve the Congregation faithfully.

John Brackenridge

PEACEMAKING IN THE USA

Two unrelated invitations took me to the USA earlier this year. The first was from the Presbyterian Church USA to join their 2003/04 International Peacemakers' Team to 14 very different conflict areas of the world, visiting Presbyteries and Congregations for a month-long speaking tour. From meetings at the PCUSA Headquarters in Louisville, Kentucky, I travelled to Kansas New Jersey, Ohio, Wisconsin and Alabama, five or six days in each Presbytery. My programme: Sunday Services, week-night church dinners, youth and children's groups, university classes, Wednesday evening Lenten Inter-Church Services in a Baptist Church – and a Rotary Club at 7.00 am one Friday morning. These, together with the hour-long radio interview and phone-in, newspaper interviews, public lectures and numerous private dinner parties, at which I was expected to 'sing for my supper', meant I had just one free day in those four weeks.

Northern Ireland, Iraq, Israel, Palestine and South Africa all featured in my talks. My theme, however, was the specifically Christian perception of peace: the cost of Peacemaking as measured by the Cross, issues of sin, violence and injustice; trust, repentance, forgiveness, reconciliation and the risk of failure – the spiritual demands of being 'Peacemaker'.

I used First Lisburn's Resurrection Window as a symbol of how one Congregation had responded to suffering and destruction by absorbing the enmity and transforming it creatively into something new and inspiring. Every time I showed the picture it was greeted by an audible gasp.

The other invitation was to preach in St James' Roman Catholic Cathedral, Seattle: seven sermons on 'The Words From The Cross' in their Good Friday 'Three Hour' Service, a wonderful occasion with some 1,000 worshippers present.

Margaret had travelled with me for five days in Omaha, Nebraska, with friends before we parted - I for my 'itineration', she for a month with her sister in Houston, Texas, including a mini-cruise to Mexico. She re-joined me in Seattle on Easter Saturday and we spent a weekend with the Rev Barry Keating, former Assistant in First Lisburn, and his wife Nancy, at Edmonds, north of Seattle, followed by a week's holiday in the snow-covered Canadian Rockies.

One day short of seven weeks away and, for me, 23 flights, we returned home on 21 April, tired but exhilarated.

Gordon Gray

LEARNING TO LISTEN

The listening is three-dimensional: listening to others, listening to ourselves, listening to God. Listening to others improves the quality of relationships in the home, church and workplace; learning to listen to ourselves helps us to grow in wholeness; and learning to listen to God helps us to deepen our spirituality.

On Tues 25 May we had an introduction to the whole course and those who were there felt that this was a course worth doing. So far 17 people have signed up, but there are still more spaces!

DATES: Tuesdays 7, 14, 21, 28 September 2004

TIME: 7.30 pm - 10.00 pm

COST: £20.00 for the four-week course.

For more information there are leaflets in the vestibule or speak to Evelyn
Tel: 90 613410

Evelyn Whyte

CHURCH OFFICE

We warmly welcome Petula Vient as First Lisburn's Office Administrator. Petula is already settling in to her new post and we take this opportunity to welcome her. Petula joins our staff meeting at 9.00 am Tuesday mornings and is available in the office by 9.30 am. You can help the work of Church Office by having any announcements with Petula early in the week. The Order of Service is prepared on Thursday and printed on Friday morning. We try to avoid unnecessary verbal announcements - so please get your information and any photocopying to Petula early in the week - she has a full schedule of work and will appreciate your co-operation.

John Brackenridge

I would like to convey my sincere thanks to members of Kirk Session and Committee who appointed me as Secretary. I feel blessed to be working with a great team of people. Thank You.

Church Office - Tel. 9266 0144 E.mail: petula@fipc.freeseve.co.uk

Petula Vient

DATES FOR YOUR DIARY

ANNUAL LEAVE

Miss Evelyn Whyte is on holiday from 21 June to 5 July

Rev. John Brackenridge is on holiday from 13 July to 4 August

Sunday Service on 18 and 25 July and 1 August will be conducted by the Rev. Dr Bert Tosh.

Sun 6 June	11.00 am	All Age Service
	3.15 pm	Senior Citizens' Service
	6.30 pm	Worship First Service
Sat 12 June		Fun Day & BBQ at Lisburn Rugby Club
Sun 20 June	11.00 am	Holy Communion with Rev Dr David Lapsley

General Assembly Week 7-11 June 2004

Please note that the following events are open to the public:

Monday 7 June 7.00 pm	Opening Service
Tuesday 8 June 12.00 noon	Communion Service in Church House open to all communicants
Wed. Thurs. Fri. 9-11 June 12.15 pm - 1.00 pm	Daily Worship. Speakers: Wed: Rev John Dickinson Thurs. Rev Ruth Patterson Friday Rev Steve Stockman
The Wednesday Rally 9 June at 7.45 pm	Speaker: Rev David Livingstone

SUNDAY EVENING SERVICES – JULY AND AUGUST

Time: 8.00 pm

July 4 Railway Street Presbyterian Church	August 1 Railway Street Presbyterian Church
July 11 Lisburn Cathedral	August 8 Lisburn Cathedral
July 18 Seymour Street Methodist Church	August 15 Seymour Street Methodist Church
July 25 First Lisburn Presbyterian Church	August 22 First Lisburn Presbyterian Church
	August 29 Railway Street Presbyterian Church

And for your further attention...

2004 Children's Ministry Certificate Course at Union Theological College, Botanic Avenue, Belfast. This Thursday evening course will run from 16 September to 25 November and is for all who work with children. Cost £70.00 for the ten weeks inclusive of deposit, all materials and tea/coffee. Please see registration form on notice board.

The Irish Presbyterian Hymnbook: – The official launch of the new hymnbook will take place on Saturday 18 September at 7.30 pm in the Assembly Hall, Belfast. Admission will be by ticket only (tickets free) and, in order to ascertain the volume of interest for the event, please add your name to the list in the vestibule over the next few weeks.

A personal thank you...

Tommy and I would like to thank the ladies of the congregation who helped in providing refreshments following Ivan's funeral service on Saturday 22 May. The sympathy and kindness expressed by the Rev. John Brackenridge, Miss Evelyn Whyte, and all our friends in First Lisburn is much appreciated by all the family.

Molly Redpath

FROM YOUR TREASURER

Did You Know...

- The congregational records are maintained using two separate software packages:

Omega system in which is recorded:

- membership names and addresses
- income in respect of freewill offering, building fund, United and World Development appeals, and Youth ministry
- attendance of members at communion
- details of members visited by the minister
- Gift Aid records and claims submitted to Inland Revenue

Omega was designed specifically for use by churches and is used extensively throughout Northern Ireland and, to a lesser extent, further afield. Its offices are based in Hull's Lane, Lisburn.

Sage software in which is recorded:

- the church's book-keeping records which in turn are the basis of the Annual Report and various other returns as required
- the staff payroll and end of year tax returns to Inland Revenue
- various statistical reports.

Sage software is used UK wide by both small and large organisations.

- Our congregation has 501 families making up 1,001 members.
- Our church, depending on how many sit in each of the ground floor pews, can accommodate between 550 and 600 members. If all our members were to start coming to church, we would have to extend the building!
- 62 of our families do not bother to contribute anything to church finances.
- There is an average attendance at communion services of 200.
- During 2003 total income was in excess of £200,000 of which 30% was used for other than our own needs - viz: United and World Development appeals, Downtown subsidy, and Church House assessments, etc.

- From time to time we accumulate cash reserves. Until this is required, it is invested with the Presbyterian Mutual Society at an average rate of return of over 5%.
- 51% of our members have signed Gift Aid declarations. One of the great mysteries is why those who pay income tax have still not signed up. ***At no cost to the individual***, the church receives from Inland Revenue 28p for every £1 donated.
- At the end of each financial year, all church treasurers have to provide to Church House a schedule of statistics - there are almost 200 separate bits of information to be supplied!

Jimmy Lynn, Treasurer

**FIRST LISBURN YOUTH ORGANISATIONS
FUND RAISING DAY
LISBURN RUGBY CLUB - SATURDAY 12 JUNE**



Support for "Lookin' Up" – PCI Sunday School Youth Project

Proceeds from both the Family Fun Day and the Car Boot Sale on 12 June will go towards the PCI Sunday School Department's Project under the theme "Lookin' Up". This covers three regions: Kenya Outreach, Street Children Worldwide and Ireland Youthreach covering Dublin and Bangor.

CHRISTIAN AID

Christian Aid Week May 11-17 was a busy time, and **Ted and Hazel** are extremely grateful to the many First Lisburn members who participated in the 'door-to-door' collection and also in the city centre on the Tuesday Flag Day. The Flag Day total was £1,295.18 and the First Lisburn door-to-door collection raised £2,251.41. Additional collectors for next year would be most welcome. Please contact Ted Parks on 9268 2376 (door-to-door) or Hazel McCall on 9260 1777 (street collection).

The local Christian Aid Committee has been allocated **Saturday 24 July at Sprucefield** as a collection day when we would appreciate your help.

Bread and Cheese lunches have now finished for this season and will resume on **Tuesday 5 October**. Many thanks to all our helpers.

Hazel McCall



PWA

Although meetings for the year have concluded, the work of PWA continues. Two requests for groups visiting Lisburn to have a meal provided were agreed and set up, with much good will and hard work by various members. We were able to bank £400.00 into our funds and this was much appreciated. Subsequent to this, we have had a request for a lunch on Black Saturday, 28 August, yet to be discussed and agreed. It takes willing workers for such events!

Some members also attended the Annual PWA members' day in Church House and this was a challenging meeting to women from all over the country. The new President, Mrs Zoe Vallely, will be coming to address the congregation on the first Sunday in November at the annual PWA Service, so note the date and do come.

An interesting afternoon was spent at Belfast Castle on Friday 21 May where a tour and video were of great interest, followed by a lovely tea and lots of chat. At this, a presentation of a silver brooch was made to Betty McGrath, our Treasurer for 19 years. Betty kept our funds in good order and gave sterling service during those years. A small present was also given to Joyce Moran to mark her almost three years as President.

We are hoping to join in the Car Boot Sale at the Sunday School Fun Day on Saturday 12 June, so any bric-a-brac will be welcome – do come and buy. Contributions can be left with me, phone 9266 3073.

Do come along when our next session commences on Tuesday 5 October.

Anne Kain

WIDER WORLD

I would like to thank those of you who have now become subscribers to *Wider World*. However, we do still have some spare copies and would appreciate more members of the congregation taking advantage of these. The cost is only £2.00 per annum, which isn't a lot compared with prices of other magazines, comics, etc. This booklet has something for everyone. There are copies on the table in the church porch – please take one, fill in your name and address on the envelope and return it via the offering plate any Sunday.

Helen Lynn

OPERATION CHRISTMAS CHILD - 2004 SHOEBOX APPEAL

What a truly wonderful response we have had so far – hats, scarves, gloves, soft toys, pencils, money, etc. The large quantity of wool which I mentioned in our last bulletin has all been put to good use.

As you know, our target this year is to fill 350 shoeboxes. We are gathering these together over the next couple of months and urgently require donations of new Christmas or children's type wrapping paper to cover the boxes. We will also need items such as necklaces, bracelets, balls (no bigger than tennis balls), skipping ropes, rubbers, sharpeners, toothpaste, soap, toothbrushes, facecloths, etc. It pays to look around as there are good offers in various shops.

We have, as yet, not been able to locate colouring-in books which would fit flat into a shoebox. Do *you* know where we might be able to obtain these?

Please bear in mind that the size of our shoeboxes is 12" x 7" x 5" - any bigger has to be dismantled and re-done into smaller boxes which takes up a lot of time. This is **not** our rule but that of the Samaritan's Purse who run this project. We would appreciate help with the covering of boxes later on – ***if you are willing to do this, please contact Joan Parks on 92 682376 or Helen Lynn on 9266 3285.***

Many thanks in anticipation of your continued support – it is greatly appreciated.

Helen Lynn

LISBURN DOWNTOWN CENTRE

'You are Christ's body - that's who you are! You must never forget this. Only as you accept your part of that body does your "part" mean anything.' (1 Cor 12 v 27).

Together much can be achieved, when we work in unity and love having respect for each other.

I would like on behalf of the Management Committee to thank all who helped, and/or took part, in the Downtown Service. It was most encouraging to see the enthusiasm and dedication of management, volunteers and members of the centre, coupled with others from the Church who were more than willing to put themselves out to help.

REQUIREMENTS FOR A HEALTHY BODY

Exercise

The fun run is on Wednesday 16 June, sponsorship forms and enrolment details are at the front of the church. Please join with us in this effort to raise funds for the Downtown Centre's outreach work to the community of Lisburn. You can exercise or refrain from exercise - but always make time to worship.

Air

Prayer is important like the air we breathe. Please pray for the work of the Centre, the Management Committee, the co-ordinator, the volunteers and all who come in to the various activities the Centre offers.

Food

The Bible is spiritual food. It is a living book and through it God will speak to you. Read it every day.

If you would like to know more or believe you could offer help in a particular area of the work please contact us at 92 672052.

LISBURN DOWNTOWN CENTRE is urgently looking for a new Treasurer. If you would be willing to volunteer to take on this position for a period of two years you will be playing a vital role in the ongoing work of the Centre, as it reaches out to the community. Anyone interested in applying, or seeking further information, please contact either Helen Lynn on 9266 3285 or Marion Craig on 9266 2842.

Thank you.

Margaret Bailie, Downtown Co-ordinator

GIRLS' BRIGADE

In September we welcomed back 64 members to a new session of Girls' Brigade. During the year another five new members joined. This is indeed very encouraging but we still have plenty of room for more.

During the year we entered various competitions arranged by Headquarters: Explorer Choral Speaking and P.E., Junior P.E., and Junior/Senior Solo Skipping. The Explorer Choral Speaking gained 1st Place in District, 2nd Place Inter-District and 3rd Place in Northern Ireland Finals.

At District level we entered Junior team games, Senior Uni Hoc and, for the first time, District Craft Competition. In this we gained three 4th places for Juniors and the first four places in the Senior Competition.

The Juniors, Seniors, Brigader and Officers raised £1,040.00 for Children in Need from a sponsored walk around Hillsborough Park. Our thanks to Heather McNeice who provided hot dogs afterwards. The Babies and Explorers raised £440.00 for Dr Barnardos from a sponsored toddle round Streamvale Open Farm. The Seniors also provided a soup and sandwich lunch and a make-up evening to raise funds for their weekend to Castlewellan Castle. We thank all the families and friends who sponsored the girls and attended the lunch and make-up evening.

Our Annual Display was held in the Church hall on 7 May 2004 when the hall was filled to capacity by families and friends of the girls. Our Guest of Honour was Mrs Karen Henry, Captain of Derryvolgie Parish Girls' Brigade.

The programme covered Brigade work, fun, and musical items. Our theme was "Special Days", beautifully depicted in the full colour of the costumes, and included Valentine's Day, Easter, Summer Holidays, Hallowe'en and Christmas. Our Finale was taken from the Bible courses followed by the girls during the year.

I would like to thank all who have helped during the year, especially my team of Officers and Sub Officers involved with the various classes, also Doreen Miskelly and Madine Anderson for providing the music throughout the year.

May Armstrong

SCOUT GROUP

The Annual General Meeting of our Scout Group was held on Wednesday 26 May.

It was with regret that we recorded the resignation of four leaders who had given many years of service to the Group. These were David McCready, Hazel Millen, Karen Graham and Katherine McKnight. We thank them for their commitment and hard work over the years, and wish them all the best in the future.

It is satisfying to know that we already have some leaders to replace them, but new volunteers are always welcome. Numbers in the entire group are increasing and it is especially pleasing to note that the Scout Section will recommence in September 2004.

Morris Wilson

OUTREACH MATTERS

AEROBICS FOR UGANDA

Laura McMillen plans to visit Uganda in August when she will be spending some time with Denise Kane. To raise funds for her UCM trip to Uganda, Laura invites you to join her ***Low Impact Aerobics*** class at 7.00 pm each Wednesday evening during June. The class is aimed to suit all levels of fitness – so why not go along and have some fun, and at the same time support Laura in her UCM trip to Uganda.

JAYNE RETURNS FROM UGANDA

In the last issue of Wavelength I outlined my prayer requests for my visit to Uganda. God has honoured these prayers and I would like to highlight in turn just how he did this.

Crossing that was safe: I flew to Heathrow on 13 May, and then on to Entebbe. Denise was there smiling broadly even though it was 6.50 am (not early by Ugandan standards). God is good - both outward and inward journeys were very smooth with no hitches.

Health: I was fine, praise God; many mosquito bites but nothing more.

Resources and their distribution: Distraction toys and posters for the treatment room were bought. Much of the rest will help to develop community work ie. provide food for families and medication for children.

Implementation of care: I spent much time dressing children's wounds. The toys purchased by the Sunday School were very useful: bubbles blown around the treatment room, tambourines clanging and kaleidoscopes distracted the children from the task in hand! The kids were fascinated by my hair, pale skin and shiny rings! A 12-year-old boy was riveted as I read him C S Lewis's *The Lion, The Witch and the Wardrobe*.

Support for Denise in her work: I did feel able to support Denise. She is quite isolated and she found it useful to have another children's nurse around. While assisting with the community child health clinic, I was left to attend to one little boy who had taken a fit, while Denise rushed to get medication. I have looked after many such children but never in the middle of Africa under a tree observed by about 30 natives!

Another day we had to rush a very ill baby to hospital using Denise's four-wheel-drive as a makeshift ambulance. We thought he would die on the slow journey to Kampala, but with many prayers we got there and he responded to treatment. The Children's Hospital in Belfast is like a five-star hotel by comparison. I was shocked that families must pay for their stay, treatment and supplies.

Teaching Harriet: Denise's non-nursing assistant, Harriet, was the major purpose of my visit. Harriet is a lovely person and probably the keenest student I have ever taught. We worked slowly through the programme I had formulated for her; the language barrier was challenging at times, as was the different environment generally. I was teaching the signs and symptoms of anaemia, had discussed lethargy and was moving on to pallor, then realised that this probably wasn't applicable in Ugandan children as it was in the UK!

We had to keep sessions short and there was still a lot I would like to have done. Harriet is adamant I return and stay for a year next time.

My final point for prayer, which was undoubtedly realised, was that **CHRIST** would be at the centre of the visit and that He would get the glory and honour. This was certainly the case. It was a great time of fun, fellowship and friendship. We studied God's word together and remembered the patients and all our friends and families at home in prayer. Denise is well and very settled out there – she sends a big hello to everyone and a thank you for the church's continued support and interest in her work.

Until my visit for Harriet's Children's Nursing Course Part 2 that is it!

Copies of Denises's April Prayer Letter are available in the vestibule.

Jayne Price

SARAH HILL – VISIT TO EUROPE

I am going away with an organization called Drop In Ministries. My adventure starts on 21 July and continues until 16 August. During this time I will be visiting many different countries including Holland, Germany, Poland and Chez Republic. We will be holding three main camps in Belarus, Ukraine and Slovakia, each lasting for one week. During the camps we will be inviting local people of all ages to come and join in some of the activities. These will include drama, sports, praise and worship and Bible study. There will also be services twice a day, which anyone can attend.

This is the first time I have ever done anything like this, but I am so excited and happy to have the opportunity. I just pray that my team and I will be kept safe throughout the time and that the people we meet will benefit from hearing the word of God.

Sarah Hill

And to come...

We also look forward to hearing from Marion following her return visit to Kosovo in July, and from Nicola on her return home in August following completion of her final year with 'Urban Promise – Toronto'.

CONGREGATIONAL RECORDS

This and That

Mr Ronnie Walker, retired Joiner/Cabinet Maker will carry out maintenance tasks around the home: To contact Mr Walker, 13 Sepon Park, Lisburn, telephone: 9266 2264. Basic rate £4.00 per hour.

Steve and Johno

Clearview Window Cleaners and Garden Maintenance

Window cleaning, grass cutting, patio cleaning, hedge trimming, stone laying etc. carried out.

Tel. 9266 6343 or Mobile No. 07775 853 511

'Save the Children' - a plea for more stamps

More stamps are requested to raise funds for 'Save the Children'. So please, take a few minutes to remove used postage stamps, leaving a wide margin, and pop them into the box on the vestibule table.

Lisburn Lions Club - Sight First Campaign

Lisburn Lions are happy to dispose of your used spectacles and hearing aids in support of the international **Sight First** campaign – you will find the bin provided underneath the vestibule table.

BAPTISMS

4 April BENJAMIN DAVID MCINTYRE, infant son of David and Sandra
26 The Paddock, Lisburn
9 May EMMA FORSYTHE MONTEITH, infant daughter of Graeme and
Rosemary, 10 Lockvale Manor, Aghalee

MARRIAGES

19 March GILLIAN HAWTHORNE AND MARTIN METHVEN
6 May MARK McMASTER AND MICHELLE FLEMING
31 May PAUL WILSON AND DR JENNY MOFFETT

DEATHS

4 April MRS ELIZABETH BELL, 2 Rosemary Drive, Lisburn
14 April DR ANDREW RAMSEY, 1A Magheralave Road, Lisburn
21 April MRS ANNIE GILMORE, 78 Warren Gardens, Lisburn
4 May MRS ANN HUGHES, 35 Beechland Drive, Lisburn
19 May MR IVAN SLOAN, 15 Magheralave Court, Lisburn
20 May MRS NORAH COBURN, 34 Eglantine Crescent, Lisburn
30 May MR JOHN FARNHAM, 183 Hillsborough Old Road, Lisburn

NEW MEMBERS

CECIL & MARGARET BAILIE, C8 Wapping Lane, Hillsborough
SUSAN & SON ARRON DOAK, 74 Hillhall Park, Lisburn
RAYMOND & LINDA FLEMING, 30 Holborn Hall, Plantation Road, Lisburn
DR MALCOLM, DAPHNE, ROSEMARY & COLIN LEES, 21 Lombard Avenue, Lisburn
DEREK, JANICE, CHRISTOPHER & ADAM MOFFETT, 11 Lisnoe Park, Lisburn
MRS MAVIS WATSON, Manor Lodge P.N. Home, Black's Road, Dunmurry
CAROLINE & SON KYLE WELLBELOVE, 74 Hillhall park, Lisburn

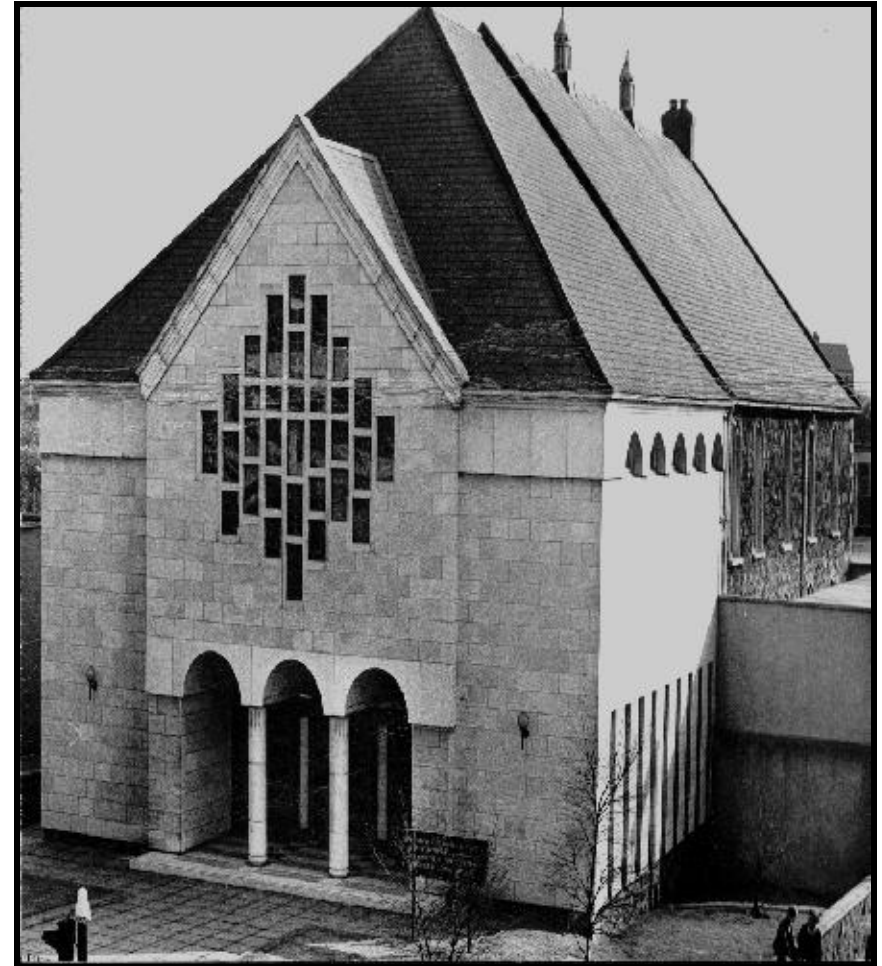
DISJOINED

MRS W MARTIN, 13 Kensington Park, Lisburn – moved to Tewkesbury
HUMPHRIES FAMILY, 6 Plantation Grove, Lisburn – moved to Banbridge

CHANGE OF ADDRESS

MR & MRS P HERMON	from	5 Thornhill Gardens, Lisburn
	to	4 Clonevin Park, Lisburn, BT28 3BL
MISS PATRICIA PARKS	from	8 Downshire Gardens, Hillsborough
	to	5 Ballymacash Park, Lisburn, BT28 3EX
MR & MRS GIRVAN PELAN	from	4 Clonevin Park, Lisburn
	to	24b North Circular Road, Lisburn

If you are aware of errors in any part of our Church records, e.g. wrong address etc., please notify the Treasurer, Jimmy Lynn. (Tel: 9266 3285)



First Lisburn Presbyterian Church

WAVELENGTH

Summer 2004

FIRST LISBURN'S YOUTH ORGANISATIONS FUND RAISING DAY

**SATURDAY 12 JUNE 2004
LISBURN RUGBY CLUB**

**FUN AFTERNOON – 3.00 p.m. – 6.00 p.m.
For the families of the Church and their friends**

ALL CHILDREN MUST BE ACCOMPANIED BY AN ADULT

Competitions: Basket Ball, Penalty Kick, Races of all sorts

Attractions: Coconut Shy, Fishing, Pot the Ball, Badge Making, Hoopla, Pre-School Play Area, Paint Ball Target, Archery, Face Painting, Tattoos

Admission: £3.00 per person
Lots of fun for all ages!

BARBECUE – For First Lisburn Congregation and friends (Bring your own chair)

6.00 p.m. – 9.00 p.m.

£6.00 per Adult, £3.00 for eldest child in family
Remaining children free
£3.00 for unaccompanied youth

RELEASE OF BALLOONS AND EPILOGUE

8.30 p.m.

Barbecue Tickets available from a youth leader at
the Vestibule Table



FIRST LISBURN'S FAMILY FUN DAY

Saturday 12 JUNE – Lisburn Rugby Club

CAR BOOT SALE - 10.00 a.m. – 12.00 noon

The day will start with a Car Boot Sale on Saturday morning 12 June 10.00 a.m. – 12.00 noon. This event is open to the public and we hope it will be well supported.

*Charges: £5.00 per car, £10.00 per van and
£1.00 for a suitcase (children only).*

FAMILY FUN AFTERNOON - 3.00 p.m. – 6.00 p.m.

CONGREGATIONAL BARBECUE 6.00 p.m. – 9.00 p.m.

Read all about it! Study the information on the page opposite and bring the family along for lots of fun. There will be a surprise item for the children in the afternoon!

We want to see a huge turnout and support from all ages at our barbecue in the evening.

Support for Sunday School Projects – "Lookin' Up"

Proceeds from the day will go towards the Sunday School's various Projects under the theme "Lookin' Up".

A full report will be included in the next edition of *Wavelength*.